

# Polka

Notenhandschrift aus Fischach, 1896 (AVS N 228)

Arr.: Christoph Lambertz

♩ = 88

Musical score for Trompete I in B, Trompete II in B, Tenorhorn in B, Posaune, and Tuba, measures 1-11. The score is in 2/4 time and B-flat major. The first system (measures 1-11) features a first ending (1.) and a second ending (2.). Dynamics include *mf* and *f*. The key signature has two flats (B-flat major).

Musical score for Trp. 1, Trp. 2, Tenh., Pos., and Tuba, measures 12-19. The score is in 2/4 time and B-flat major. The first system (measures 12-19) features a first ending (1.) and a second ending (2.). Dynamics include *mf*. The key signature has two flats (B-flat major).

Musical score for Trp. 1, Trp. 2, Tenh., Pos., and Tuba, measures 20-23. The score is in 2/4 time and B-flat major. The first system (measures 20-23) features a first ending (1.) and a second ending (2.). Dynamics include *p*. The key signature has two flats (B-flat major).

23

Trp. 1

Trp. 2

Tenh.

Pos.

Tuba

*f*

*f*

*f*

*f*

*f*

1.

35

Trp. 1

Trp. 2

Tenh.

Pos.

Tuba

*mf*

*mf*

*mf*

*mf*

*mf*

*p*

*p*

*p*

*f*

*f*

*f*

*f*

*f*

1.

2.

45

Trp. 1

Trp. 2

Tenh.

Pos.

Tuba

*mf*

*mf*

*mf*

*f*

1.

2.

54

Trp. 1

Trp. 2

Tenh.

Pos.

Tuba

*f*

*p*

*f*

*f*

*p*

*f*

*f*

*p*

*f*

1.

2.

Trompete I in B

# Polka

Notenhandschrift aus Fischach, 1896 (AVS N 228)

Arr.: Christoph Lambertz

♩ = 88

*mf*

8 **1.** **2.**

**D.C. 1. Teil, dann Trio** *f* **Trio**

16 **1.** **2.** *p*

23

31 *f* **1.** **2.** *mf*

38 *p* *f* **1.** **2.** *mf*

45

51 **1.** **2.** *f* *p*

57 *f* **1.** **2.**

Trompete II in B

# Polka

Notenhandschrift aus Fischach, 1896 (AVS N 228)

Arr.: Christoph Lambertz

♩ = 88

mf

8 1. 2. f

15 1. 2. **Trio** p

D.C. 1. Teil, dann Trio

21

29 1. 2. f mf

36 p f

43 1. 2. mf

50 1. 2. f p

57 1. 2. f

Tenorhorn in B

# Polka

Notenhandschrift aus Fischach, 1896 (AVS N 228)

Arr.: Christoph Lambertz

♩ = 88

*mf*

1. 2. *f*

1. 2. *f* **Trio** *p*

D.C. 1. Teil, dann Trio

22 *p*

29 *f* *mf*

36 *p* *f*

43 1. 2. *mf*

50 1. 2. *f* *p*

57 *f* 1. 2.

## Polka

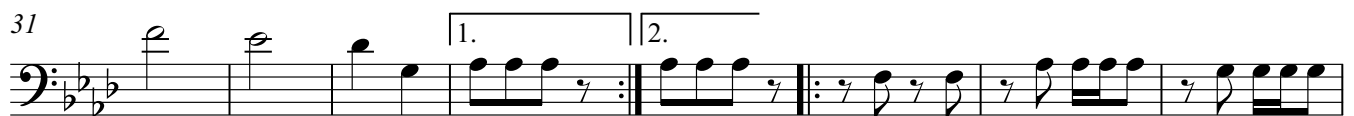
Notenhandschrift aus Fischach, 1896 (AVS N 228)

Arr.: Christoph Lambertz

♩ = 88

*mf**f*

D.C. 1. Teil, dann Trio

*p**f**mf**p**f**mf**f**p**f*

Tuba

# Polka

Notenhandschrift aus Fischach, 1896 (AVS N 228)

Arr.: Christoph Lambertz

♩ = 88

1. | 2.

*mf*

10

1. | 2.

*f*

D.C. 1. Teil, dann Trio

19 **Trio**

*p*

26

*f*

34

1. | 2.

*mf* *p* *f*

42

1. | 2.

*mf*

49

1. | 2.

*f*

56

1. | 2.

*p* *f*